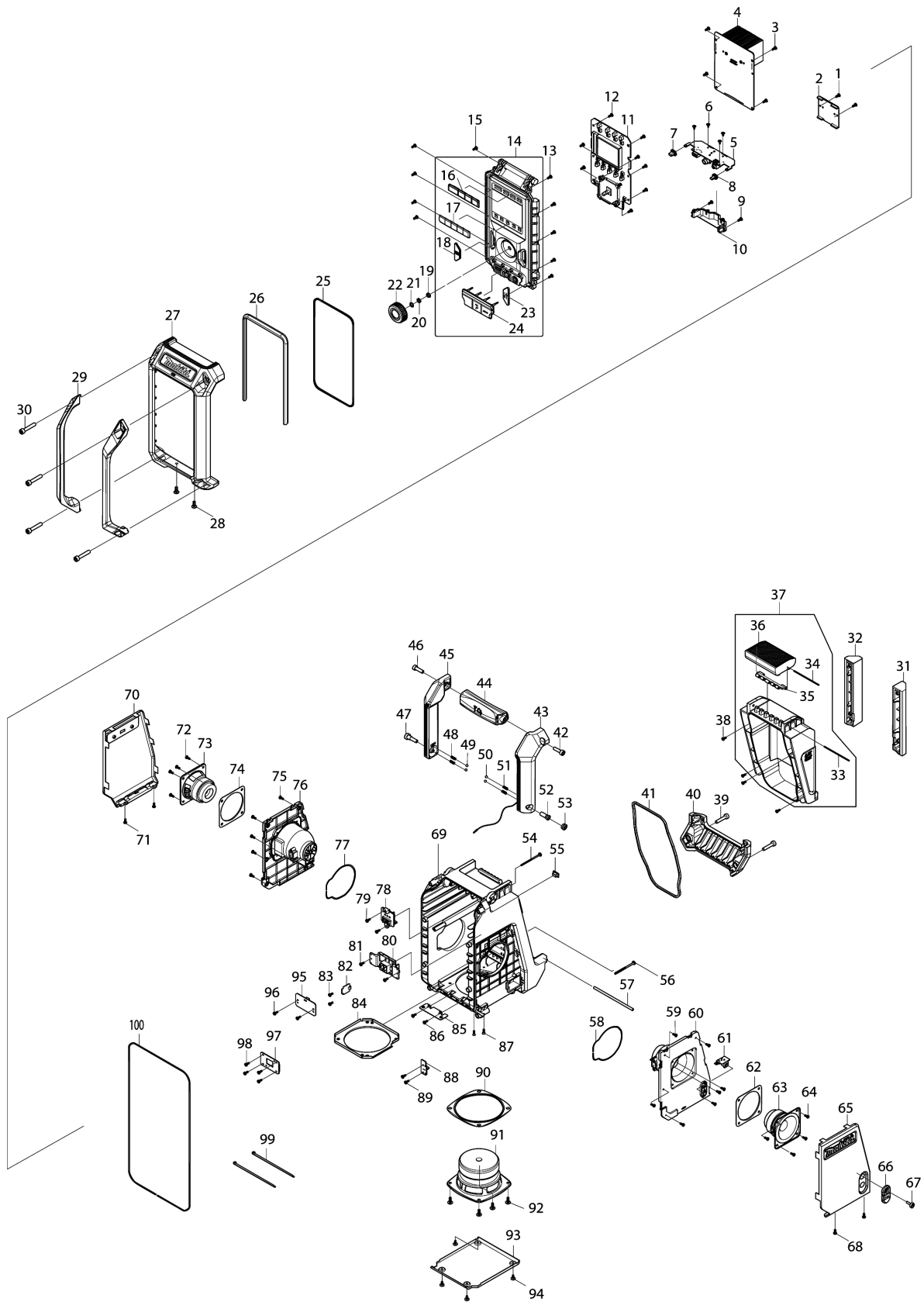


Model No.DMR115 JOB SITE RADIO



Model No.DMR115 JOB SITE RADIO

Position	Référence pièce	Description	Echange	QTE	New/Old	Option 1	Option 2	COMMENTAIRE
001	SE00000521	SCREW PTB 3X8(ZK) 29S16308001		2			P1	
002	SE00000683	PCB H ASS'Y		1				
003	SE00000521	SCREW PTB 3X8(ZK) 29S16308001		4			P1	
004	SE00000774	PCB A ASS'Y		1				
005	SE00000775	PCB P ASS'Y		1				
006	SE00000685	SCREW PTB 2.6X5 ZK		4				
007	SE00000750	LED RUBBER L		1				
008	SE00000751	LED RUBBER R		1				
009	SE00000521	SCREW PTB 3X8(ZK) 29S16308001		2			P1	
010	SE00000752	JACK PCB HOLDER		1				
011	SE00000776	PCB C ASS'Y		1				
012	SE00000521	SCREW PTB 3X8(ZK) 29S16308001		8			P1	
013	SE00000521	SCREW PTB 3X8(ZK) 29S16308001		5			P1	
014	SE00000777	FRONT CABINET ASS'Y(CE)		1				
D10		INC. 16-18,23,24						
015	SE00000521	SCREW PTB 3X8(ZK) 29S16308001		5			P1	
016	SE00000779	POWER KEY		1				
017	SE00000695	PRESET KEY		1				
018	SE00000780	AUTO TUNE		1				
019	SE00000754	EN/SW WASHER		1				
020	SE00000755	EN/SW NUT		1				
021	SE21B1110A	ROTARY KNOB RING		1		0	P1	
022	SE00000698	ROTARY KNOB		1				
023	SE00000697	EQ KEY		1				
024	SE00000699	JACK RUBBER COVER		1				
025	SE00000700	FRONT CABINET PACKING		1				
026	SE00000756	FRONT LENS		1				
027	SE00000701	FRONT BUMPER		1				
028	SE09064161	SCREW M4X16		2		0	P1	
029	SE00000703	FRONT BAR		2				
030	SE00000709	SCREW PTHE 6X33(CR)		4				
031	SE00000704	BATTERY BUMPER R		1				
032	SE00000705	BATTERY BUMPER L		1				
033	SE00000539	PIN D2X77 2100B300200		1			P1	
034	SE00000533	PIN D2X88 2100B300100		1			P1	
035	SE00000536	LOCKER HINGE 3300B30000010		1			P1	
036	SE00000706	LOCKER COVER		1				
037	SE00000757	BATTERY COVER		1				
D10		INC. 33-36						
038	SE00000521	SCREW PTB 3X8(ZK) 29S16308001		4			P1	
039	SE00000709	SCREW PTHE 6X33(CR)		2				

Please order the parts with part number.

Print Date 18/12/2019

Model No.DMR115 JOB SITE RADIO

Position	Référence pièce	Description	Echange	QTE	New/Old	Option 1	Option 2	COMMENTAIRE
040	SE00000710	REAR BUMPER		1				
041	SE00000711	BATTERY COVER PACKING		1				
042	SE00000176	SCREW PTHE6X20(CR)		1		0	P1	
043	SE00000781	RIGHT HANDLE ASS'Y		1				
044	SE00000713	HANDLE BAR		1				
045	SE00000714	LEFT HANDLE ASS'Y		1				
046	SE00000176	SCREW PTHE6X20(CR)		1		0	P1	
047	SE00000715	SCREW PTHE 6X17(CR)		1				
048	SE00000759	SPRING		2				
049	SE09994007	STEEL BALL		2		0	P1	
050	SE09994007	STEEL BALL		2		0	P1	
051	SE00000759	SPRING		2				
052	SE00000716	SCREW PTHE 7X16(CR)		1				
053	SE00000717	SCREW PTHE 10.8X4.5(CR)		1				
054	SE00000445	SCREW PTB 3X45(NI)		1			P1	
055	SE00000721	UPDATE RUBBER		1				
056	SE00000445	SCREW PTB 3X45(NI)		1			P1	
057	SE021PC030	BATTERY COVER LOCKER		1		0	P1	
058	SE00000730	SPEAKER HOLDER PACKING		1				
059	SE00000521	SCREW PTB 3X8(ZK) 29S16308001		7			P1	
060	SE00000782	SPEAKER HOLDER R		1				
061	SE00000724	PCB F ASS'Y		1				
062	SE00000729	SPRAKER 2.5''' PACKING		1				
063	SE00000728	SPEAKER ASS'Y(2.5''')		1				
064	SE00000521	SCREW PTB 3X8(ZK) 29S16308001		4			P1	
065	SE00000725	RIGHT SPK NET ASS'Y		1				
066	SE00000726	DC JACK COVER		1				
067	SE00000404	SCREW PTHE 3X14(CR)		1			P1	
068	SE00000521	SCREW PTB 3X8(ZK) 29S16308001		2			P1	
069	SE00000783	REAR CABINET ASS'Y(BLUE:CE)		1				
070	SE00000727	LEFT SPK NET ASS'Y		1				
071	SE00000521	SCREW PTB 3X8(ZK) 29S16308001		2			P1	
072	SE00000521	SCREW PTB 3X8(ZK) 29S16308001		4			P1	
073	SE00000728	SPEAKER ASS'Y(2.5''')		1				
074	SE00000729	SPRAKER 2.5''' PACKING		1				
075	SE00000521	SCREW PTB 3X8(ZK) 29S16308001		5			P1	
076	SE00000731	SPEAKER HOLDER L		1				
077	SE00000730	SPEAKER HOLDER PACKING		1				
078	SE00000732	TERMINAL 10.8V-A-3PIN		1				
079	SE00000521	SCREW PTB 3X8(ZK) 29S16308001		2			P1	
080	SE00000733	TERMINAL E ASS'Y		1				

Please order the parts with part number.

Print Date 18/12/2019

Model No.DMR115 JOB SITE RADIO

Position	Référence pièce	Description	Echange	QTE	New/Old	Option 1	Option 2	COMMENTAIRE
081	SE00000521	SCREW PTB 3X8(ZK) 29S16308001		2			P1	
082	SE00000785	PCB G ASS'Y		1				
083	SE00000193	SCREW 3X10		2		0	P1	
084	SE00000734	SPEAKER PLATE		1				
085	SE00000735	REAR PLATE		1				
086	SE00000521	SCREW PTB 3X8(ZK) 29S16308001		2			P1	
087	SE00000736	SCREW JMF 3X10 ZK		2				
088	SE00000737	PCB B ASS'Y		1				
089	SE00000521	SCREW PTB 3X8(ZK) 29S16308001		2			P1	
090	SE00000738	SPEAKER 4"" PACKING		1				
091	SE00000739	SPEAKER ASS'Y (4"")		1				
092	SE09064161	SCREW M4X16		4		0	P1	
093	SE00000761	SPEAKER GRILL B		1				
094	SE00000521	SCREW PTB 3X8(ZK) 29S16308001		4			P1	
095	SE00000786	PCB D ASS'Y		1				
096	SE00000521	SCREW PTB 3X8(ZK) 29S16308001		2			P1	
097	SE00000743	PCB J ASS'Y		1				
098	SE00000521	SCREW PTB 3X8(ZK) 29S16308001		4			P1	
099	SE00000195	W/TIES 100MM		2		0	P1	
100	SE00000744	REAR CABINET PACKING		1				
A01	SE00000679	AC ADAPTER (CE)		1				

Please order the parts with part number.

Print Date 18/12/2019