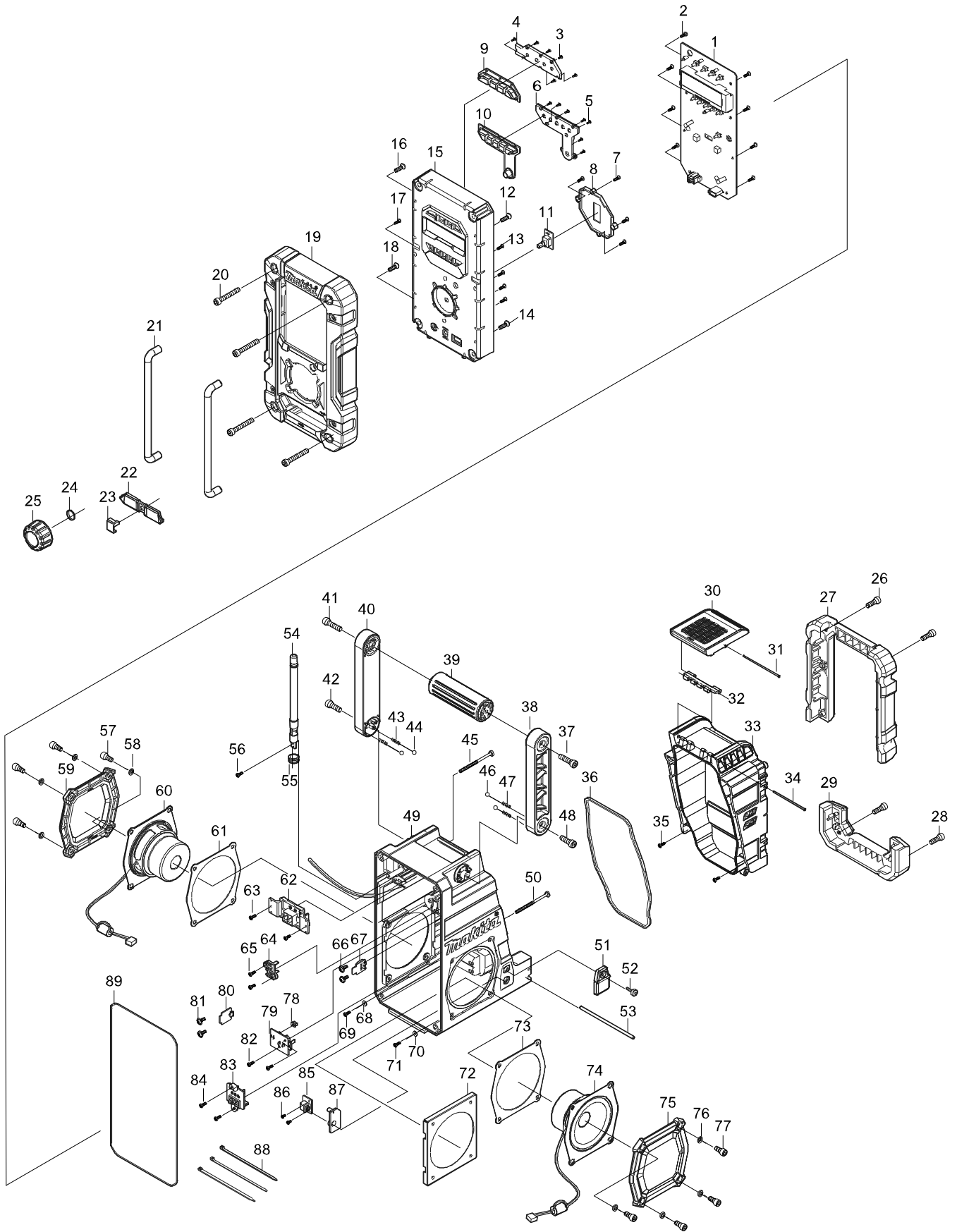


# Numéro du modèle DMR112 JOB SITE RADIO



Position	Référence pièce	Description	Echar	QTE	N/O	Option 1	Option 2	COMMENTAIRE
001	SE00000658	PCB A ASS'Y		1				
002	SE00000325	SCREW PTB 3X8(NI)		8			P1	
003	SE09090011	SCREW 1.7		5	0		P1	
004	SE00000659	POWER BUTTON HOLDER		1				
005	SE09090011	SCREW 1.7		7	0		P1	
006	SE00000660	PRESET BUTTON HOLDER		1				
007	SE00000325	SCREW PTB 3X8(NI)		4			P1	
008	SE00000656	KNOB LENS HOLDER		1				
009	SE00000661	POWER BUTTON		1				
010	SE00000662	PRESET BUTTON		1				
011	SE00000663	PCB P ENCODER ASS'Y		1				
012	SE09064161	SCREW M4X16		1	0		P1	
013	SE00000325	SCREW PTB 3X8(NI)		4			P1	
014	SE09064161	SCREW M4X16		1	0		P1	
015	SE00000664	FRONT CABINET ASS'Y(CE)		1				
016	SE09064161	SCREW M4X16		1	0		P1	
017	SE00000325	SCREW PTB 3X8(NI)		1			P1	
018	SE09064161	SCREW M4X16		1	0		P1	
019	SE00000666	FRONT BUMPER		1				
020	SE00000160	SCREW PTHE6X47(CR)		4	0		P1	
021	SE0338PC5Z	FRONT BAR		2	9		P12	
022	SE00000355	JACK RUBBER COVER		1			P67	
023	SE00000356	JACK COVER		1			P1	
024	SE21B1110A	ROTARY KNOB RING		1	0		P1	
025	SE00000482	ROTARY KNOB (BLK)		1				
026	SE09176166	HEX SCREW M6X16		2	0		P1	
027	SE00000357	BATTERY BUMPER		1			P18	
028	SE09176166	HEX SCREW M6X16		2	0		P1	
029	SE00000359	REAR BUMPER		1			P12	
030	SE00000362	LOCKER COVER		1			P6	
031	SE00000364	LOCKER FIXER PIN 73.5MM		1			P1	
032	SE00000365	LOCK HINGER		1			P1	
033	SE00000483	BATTERY COVER		1				
034	SE00000369	LOCKER FIXER PIN 64.5MM		1			P1	
035	SE00000325	SCREW PTB 3X8(NI)		2			P1	
036	SE00000371	BATTERY COVER PACKING		1			P9	
037	SE00000176	SCREW PTHE6X20(CR)		1	0		P1	
038	SE00000177	HANDLE HOLDER(R)		1	0		P3	
039	SE00000179	HANDLE		1	1		P5	
040	SE00000180	HANDLE HOLDER (L)		1	0		P3	
041	SE00000176	SCREW PTHE6X20(CR)		1	0		P1	
042	SE09176166	HEX SCREW M6X16		1	0		P1	
043	SE00000184	SPRING		2	0		P1	
044	SE09994007	STEEL BALL		2	0		P1	
045	SE00000445	SCREW PTB 3X45(NI)		1			P1	
046	SE09994007	STEEL BALL		2	0		P1	
047	SE00000184	SPRING		2	0		P1	
048	SE09176166	HEX SCREW M6X16		1	0		P1	

