

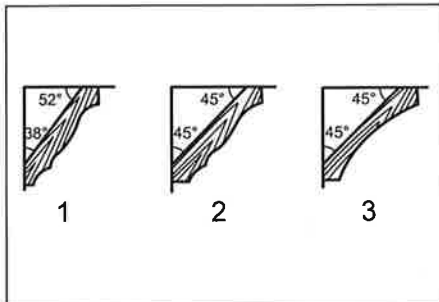
# Crown molding stopper set

## INSTRUCTION MANUAL

P/N 192628-9 for LS1013, LS1214

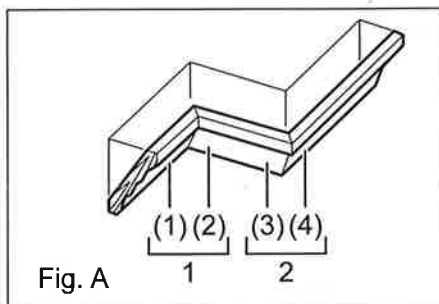
P/N 192622-1 for LS1030N, LS1040, LS1045

P/N 195253-5 for LS1220, LS1221, LS1216



1. 52/38° type crown molding
2. 45° type crown molding
3. 45° type cove molding

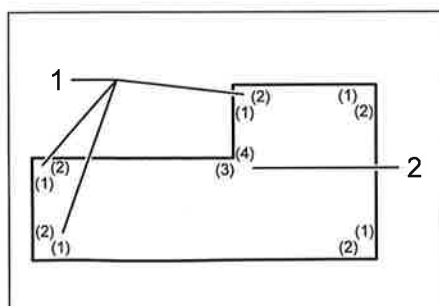
There are two common types of crown moldings and one type of cove moldings; 52/38° wall angle crown molding, 45° wall angle crown molding and 45° wall angle cove molding. See illustrations.



There are crown and cove molding joints which are made to fit "Inside" 90° corners ((1) and (2) in Fig. A) and "Outside" 90° corners ((3) and (4) in Fig. A).

### Measuring

Measure the wall length and adjust workpiece on table to cut wall contact edge to desired length. Always make sure that cut workpiece length at the back of the workpiece is the same as wall length. Adjust cut length for angle of cut. Always use several pieces for test cuts to check the saw angles.

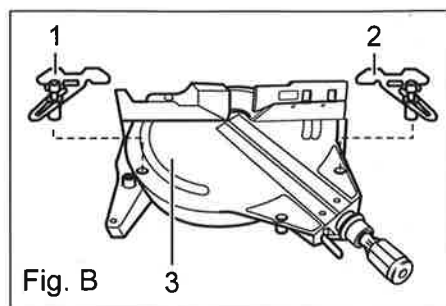


1. Inside corner
2. Outside corner

Crown molding stoppers allow easier cuts of crown molding without tilting the saw blade. Install them on the turn base or the base as shown in the figures.

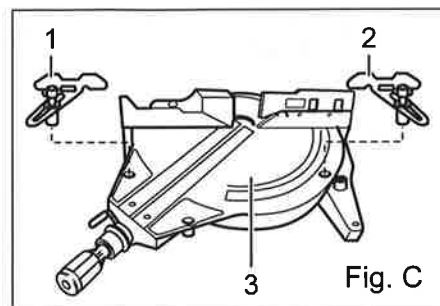
- P/N 192628-9 for LS1013, LS1214

Fig. B: At right 45° miter angle



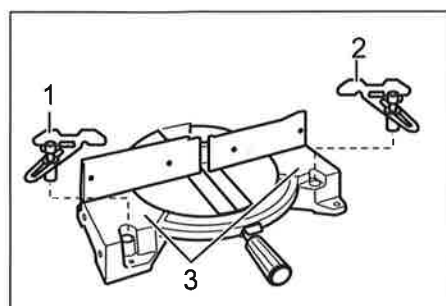
1. Crown molding stopper L  
2. Crown molding stopper R  
3. Turn base

Fig. C: At left 45° miter angle



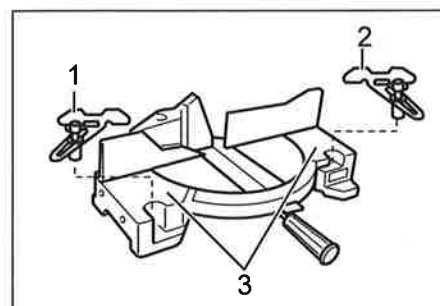
1. Crown molding stopper L  
2. Crown molding stopper R  
3. Turn base

- P/N 192622-1 for LS1030N, LS1040, LS1045  
LS1030N



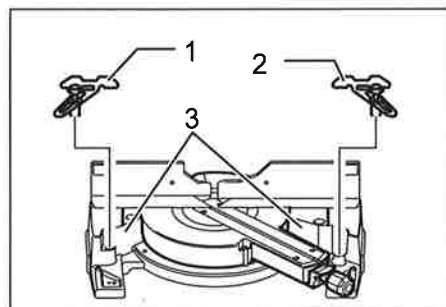
1. Crown molding stopper L  
2. Crown molding stopper R  
3. Base

LS1040, LS1045



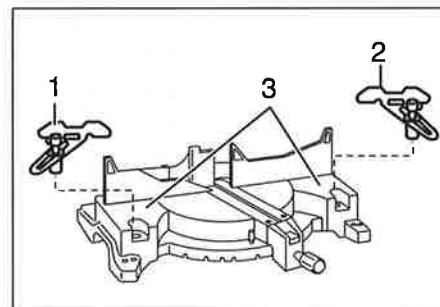
1. Crown molding stopper L  
2. Crown molding stopper R  
3. Base

- P/N 195253-5 for LS1220, LS1221, LS1216  
LS1216

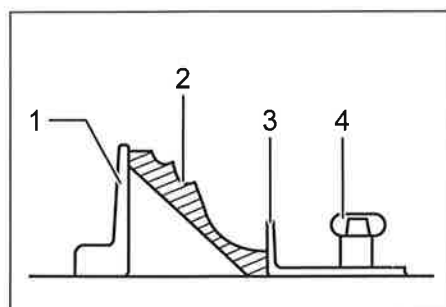


1. Crown molding stopper L  
2. Crown molding stopper R  
3. Base

LS1220, LS1221



1. Crown molding stopper L  
2. Crown molding stopper R  
3. Base



1. Guide fence  
2. Crown molding  
3. Crown molding stopper  
4. Screw

Position crown molding with its WALL CONTACT EDGE against the guide fence and its CEILING CONTACT EDGE against the crown molding stoppers as shown in the figure. Adjust the crown molding stoppers according to the size of the crown molding. Tighten the screws to secure the crown molding stoppers. Refer to the table (C) for the miter angle. Use the sub-fence R (for LS1013, LS1214) to secure the crown molding more firmly.

	Position in Fig. A	Miter angle	Finished piece
For inside corner	(1)	Right 45°	Save the right side of blade
	(2)	Left 45°	Save the left side of blade
For outside corner	(3)		Save the right side of blade
	(4)	Right 45°	Save the left side of blade